

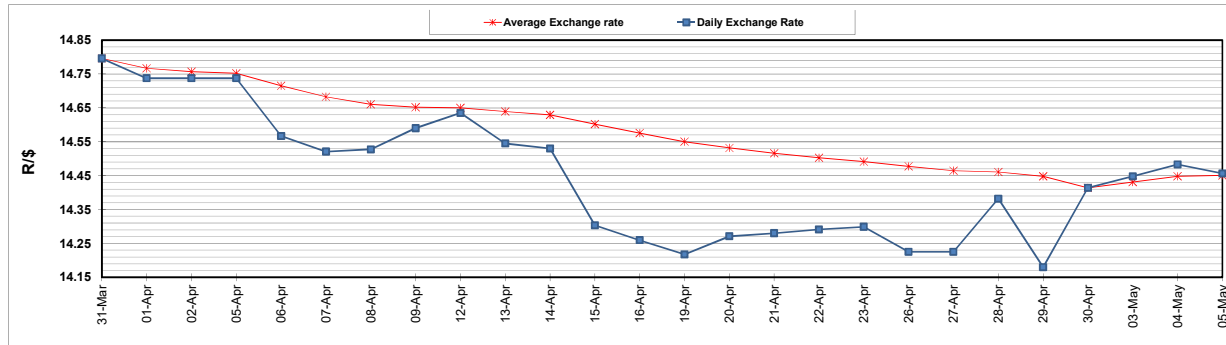
	PETROL 95 ULP	PETROL 93 ULP & LRP	DIESEL 0.05%	DIESEL 0.005%	ILL. PAR.
GAUTENG PUMP PRICE (SA c/l) AS FROM 05/05/2021	1,723.000	1,701.000	-	-	-
WHOLESALE PRICE (SA c/l) AS FROM 05/05/2021	-	-	1,446.620	1,450.020	857.488
SINGLE NATIONAL MAXIMUM RETAIL PRICE	-	-	-	-	1,076.000
BASIC FUEL PRICE - 05/05/2021 (SA c/l)	759.191	747.142	707.338	711.941	698.367
PRESS RELEASE CONTRIBUTION TO BFP 05/05/2021 - 05/05/2021 (SA c/l)	727.170	715.170	659.630	663.030	644.128
UNIT OVER/(UNDER) RECOVERY - 05/05/2021 (SA c/l)	(32.021)	(31.972)	(47.708)	(48.911)	(54.239)
AVERAGE BASIC FUEL PRICE 30/04/2021 - 05/05/2021	741.554	728.894	689.192	693.918	680.138
AVERAGE UNIT OVER/(UNDER) RECOVERY 30/04/2021 - 05/05/2021	(7.634)	(6.974)	(6.312)	(8.388)	(18.760)

ANALYSIS MOVEMENT OF AVERAGE OVER/(UNDER) RECOVERY

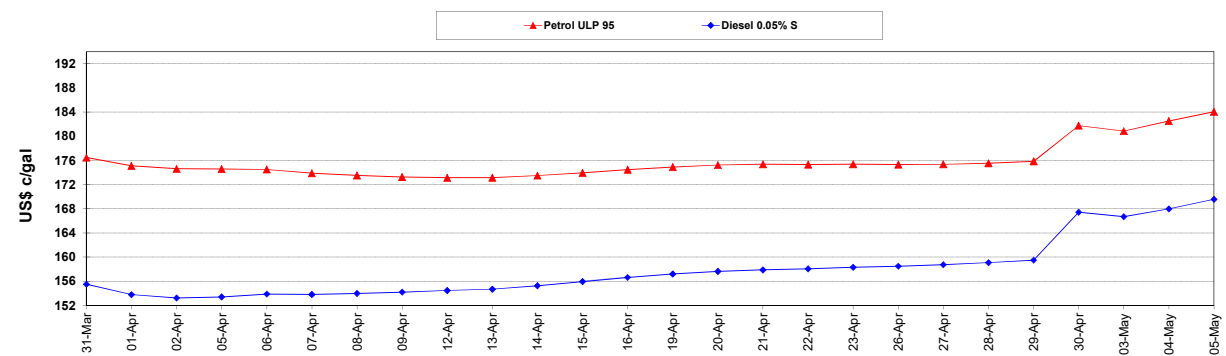
	PETROL 95	PETROL 93	DIESEL 0.05%	DIESEL 0.005%	ILL. PAR.
- MOVEMENT IN INTERNATIONAL PRODUCT PRICES	(7.516)	(6.858)	(6.202)	(8.278)	(18.652)
- MOVEMENT IN EXCHANGE RATE	(0.118)	(0.116)	(0.110)	(0.110)	(0.108)
AVERAGE UNIT OVER/(UNDER) RECOVERY 30/04/2021 - 05/05/2021	(7.634)	(6.974)	(6.312)	(8.388)	(18.760)

R/\$ EXCHANGE RATE - (R/\$14.4565- 05/05/2021)

EXCHANGE RATE USED IN BASIC FUEL PRICE



INTERNATIONAL PRODUCT PRICES OF BASKET USED IN BASIC FUEL PRICE



BASIC FUEL PRICE IN SA CENTS PER LITRE

